

## 5 Way Manifold Ball Valve 10049533



**⚠ WARNING**

**Read this instruction manual before use.**

Using this device without understanding this products operation and care may lead to injury. If you do not understand how to use this device and do not receive proper training, do not use this product.

# 1.0 WARRANTY

- AWG Fittings, LLC warrants to the original purchaser and all subsequent purchasers of the AWG Fittings, LLC products that the product is free from defects in material and workmanship during a one (1) year period from the date of its sale by AWG Fittings, LLC.
- AWG Fittings, LLC's obligation under this warranty is specifically limited to replacing or repairing any product which is determined by AWG Fittings, LLC's inspection to be in a defective condition attributed to AWG Fittings, LLC's manufacture or design. If AWG Fittings LLC determines the product is defective, then AWG Fittings, LLC will repair or replace the product during the warranty period. The purchaser or beneficiary must notify AWG Fittings, LLC of any alleged defect within a reasonable time period.
- If AWG Fittings, LLC determines that the product is defective, then it will replace the product, repair the product or refund the purchase price, at AWG Fittings, LLC's election.
- This warranty is a LIMITED WARRANTY. The original purchaser of the product and any subsequent purchaser of the product and any person who is an intended or unintended beneficiary of the product shall not be entitled to recover from AWG Fittings, LLC and consequential or incidental damages for injury to person and/or property resulting from any defective product manufactured or assembled by AWG Fittings, LLC. It is agreed that the price stated and paid for the product is in part consideration for limiting AWG Fittings, LLC's liability.
- This is a limited Expressed Warranty only. AWG Fittings, LLC EXPRESSLY DISCLAIMS WITH RESPECT TO THE PRODUCT ALL IMPLIED WARRANTIES OF **MERCHANTABILITY** AND ALL IMPLIED WARRANTIES OF **FITNESS FOR A PARTICULAR PURPOSE**.
- There are NO WARRANTIES of any nature made by AWG Fittings, LLC beyond that stated in this Warranty

# 1.0 Safety and Cautions

## Meaning of safety words

### DANGER

Indicates an imminently hazardous situation which, if not avoided, will result in death or serious injury

### WARNING

Indicates a potentially hazardous situation which, if not avoided, could result in death or serious injury.

### CAUTION

Indicates a potentially hazardous situation which, if not avoided, may result in minor or moderate injury.

## Safety and Cautions

### DANGER

This equipment is to be used by trained firefighting personnel only. Failure to obtain proper training may result in severe injury or death.

### DANGER

Do not exceed maximum operating pressure. Exceeding the maximum rated pressure for this appliance may cause malfunction, or failure resulting in severe injury or death.

### DANGER

Failure of fittings and hoses can result in injury. Use caution not to exceed hose pressures as stated in NFPA 1961 for the type of hose being used.

### DANGER

Make sure all connections are secure and complete. Failure to ensure proper connection may result in leaks or cause the devices to become disconnected under pressure resulting in injury or death.

### DANGER

Open and close all valves slowly. Failure to operate valves slowly may cause water hammer, which may result in damage or failure of hose, coupling devices, and appliances leading to injury or death.

### WARNING

Do not use if damaged. Damage to product may cause malfunction or failure. Remove from service until unit can be repaired.

### WARNING

Check for damage or worn coupling connections. Damage or worn connections may become disconnected under pressure. Remove from service to be repaired by an AWG certified repair facility.

### CAUTION

For use with fresh or salt water, with or without firefighting foam.

### WARNING

Altering of this device may reduce its operating effectiveness, or safety. Do not alter or change in any way from its intended design.

# 2.0 Overview

## Dimensions:

Height:

Length:

Depth:

Weight: 36.3lbs. (16.5kg)

## Construction:

Aluminum Body

Anodized aluminum Ball valves

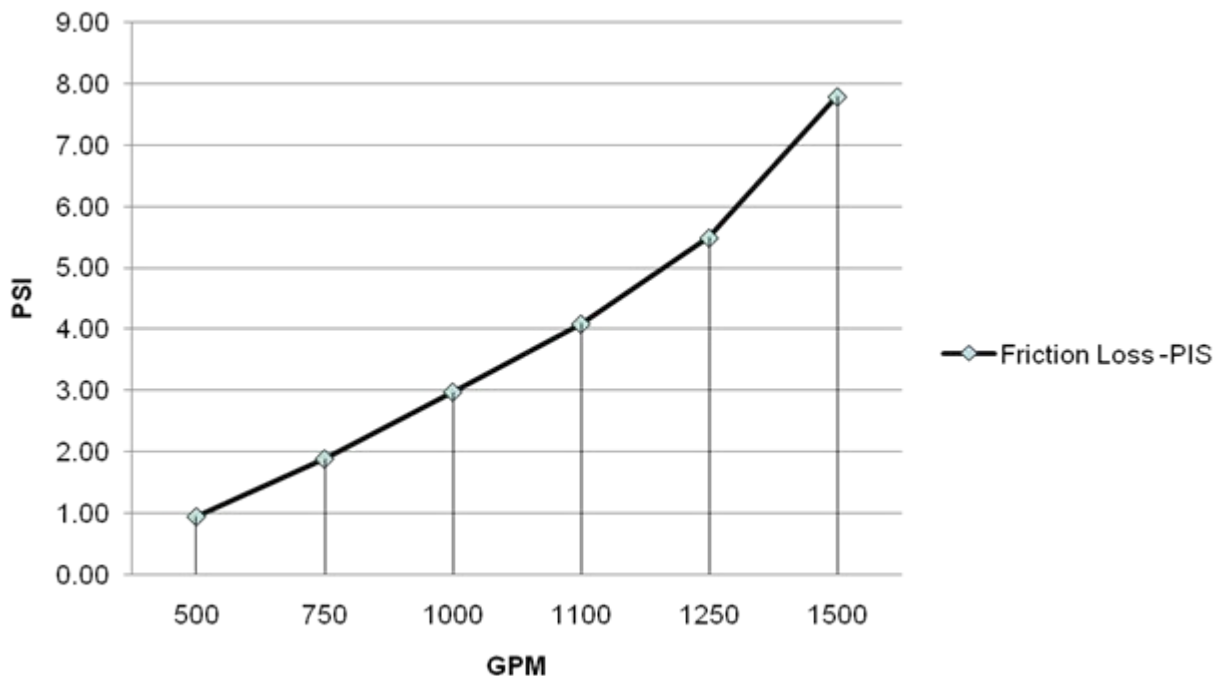
## Operating pressures:

Normal operating pressure is 200 PSI.

Tested burst pressure per NFPA 1965.

**Friction Loss:** Several different configurations and valve discharge use may effect to actual friction loss created in the field. The fire department should evaluate actual friction loss during training.

Factory test results



# 3.0 Operation

## Using the 5 Way Manifold Ball Valve

**CAUTION**

Place the manifold on level ground to prevent valve tilting.

Do not use if damaged. Damage to product may cause malfunction or failure. Remove from service until unit can be repaired.

**DANGER**

Close all ball valves before connecting hoses.

Fully attach hose connections to manifold.

Make sure all connections are secure and complete. Failure to ensure proper connection may result in leaks or cause the devices to become disconnected under pressure resulting in injury or death.

**WARNING**

Make sure that supply hose is without kinks or bends and is straight for a minimum of 20 feet before and behind the valve to minimize to possibility of the valve moving and causing injury.

Fill hose line with water slowly.

Open an unused 2 ½" valve to bleed off air. Close valve when air has been exhausted.

**WARNING**

When hose line is filled, slowly open the desired valves then slowly increase pressure.

**DANGER**

Stand back from manifold when pressurizing the supply line.

Open and close all valves slowly. Failure to operate valves slowly may cause water hammer, which may result in damage or failure of hose, coupling devices, and appliances leading to injury or death.

**WARNING**

Always open and close valves fully and do not regulate water flow or pressure with the ball valves.

# 3.0 Operation

## **⚠ DANGER**

On any appliance with a non-threaded coupling, (i.e. Storz) check the locking device on coupling for damage and ensure proper operation. It should be clean, clear and free of damage. If locking device is malfunctioning, repair or replace the lock.

When operations are complete:

## **⚠ DANGER**

Bleed off any excess pressure in the hose lines before you attempt to disconnect any hose or apparatus and disconnect and drain hose lines.

Disconnect hoses and drain water from the manifold and relief valve.

Check all valve handles to ensure they are in closed position.

Return valve to its proper mounting bracket in fire apparatus and secure.

Periodically check ball valves to ensure proper operation, always return handles to closed position for storage.

Check for damage or worn coupling connections. Damage or worn connections may become disconnected under pressure. Remove from service and repair appropriate parts.

Do not use if damaged. Damage to product may cause malfunction or failure. Remove from service until unit can be repaired at an AWG certified repair facility.

## **⚠ WARNING**

In case of leakage replace gaskets as needed.

Check all screws and bolts to ensure proper tightness.

## **⚠ WARNING**

Check gaskets and swivels to ensure proper operation. Repair or replace as needed. If repairs cannot be made immediately, remove from service until repaired by an AWG certified technician.

Foam may be used with this appliance. Make sure to flush completely with fresh water after use. Some foam concentrates may leave residue that may cause corrosion or become sticky and interfere with the operation of the gate valve or PRV device and shorten the service life of this appliance.

## 4.0 Care and Maintenance

Salt water may be used with this appliance. Be sure to flush with large amounts of fresh water after use with salt water. Saltwater may shorten the service life of this appliance due to corrosion.

Flush with fresh clean water after use to remove dirt and debris. This is especial important if saltwater or foam as been used in this appliance.



Lubricate as necessary with AWG recommended lubricant. AWG lubricant is water resistant and does not contain mineral oil, solvents or silicone.

Using other than the recommended lubricants may cause the o-rings to swell or degrade faster than expected.

Do not use excessive amounts of lubricant, over lubricating may cause dirt to collect inside the valve.

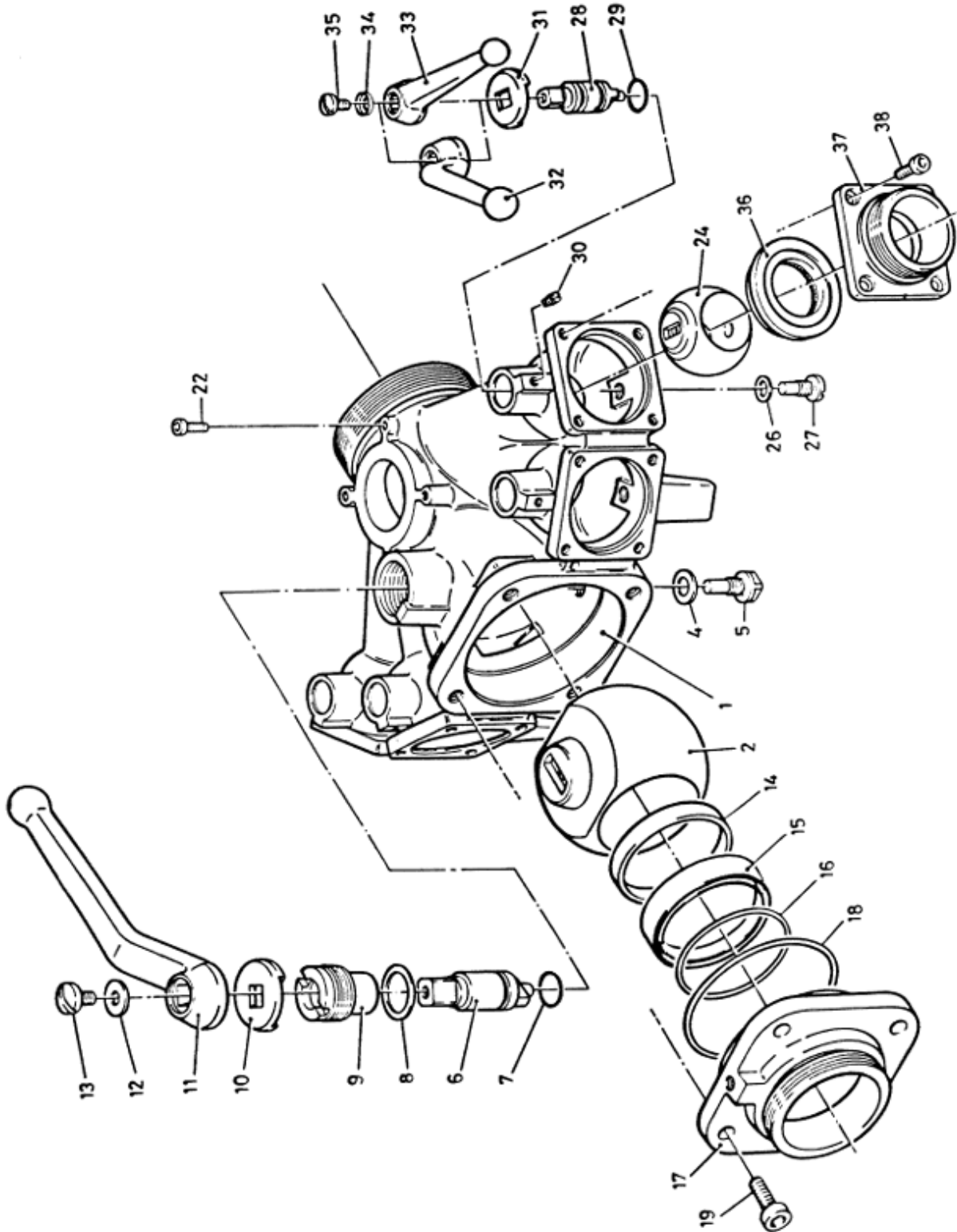
Use only recommended lubricant, improper lubricants may cause premature failure of o-rings and seals.

Apply lubricant to the following points to ensure smooth operation:

With the valves closed, lightly lubricate along the seam where the ball inside the valve contacts the body of the valve.

Open and close valve several times to ensure smooth operation and spread lubricant along the face of the ball valve.

# 5.0 Parts list





# 5.0 Parts list

Pos.	Qty.	Part Number	Description
2	1	20003035	Ball 100
4	1	00079359	Gasket 17x28x1
5	1	50197045	Bearing Screw 18x40
6	1	40133591	Tappet 35x63
7	1	00021651	O-Ring 28.15x3.53
8	1	00065959	Gasket 39x52x1
9	1	40133695	Stuffing Box 35
10	1	50093432	Handle Stop (Center)
11	1	30269432	Handle (Center)
12	1	50275548	Washer 12.5x34x3
13	1	50079448	Screw 12x18
14	1	50137254	Gasket 107.4x110x3
15	1	50283934	Support Ring
16	1	00034451	O-Ring 97.79x5.33
17	1	30259432	Flange R40M
18	1	00035751	O-Ring 139.07x5.33
19	4	00216348	Socket Head Screw 14x35
20	1	00072750	Gasket 82x90x3 rubber SH.70+-5 (not shown)
21	1	40049332	Plate square 105 (not shown)
22	4	00214448	Socket Head Screw 8x25
24	4	40054135	Ball 50
26	4	00079259	Gasket 14x22x1
27	4	50115845	Bearing Screw 14x28
28	4	40048645	Tappet 28x78
29	4	00021251	O-Ring 21.82x3.53
30	4	50105645	Set Screw 8x12
31	4	55111132	Handle Stop (Inner/Outer)
32	2	40320732	Bent Handle (Inner)
33	2	30209232	Straight Handle (Outer)
34	4	00210347	Lock Washer 12.5
35	4	50184548	Screw 10x15
36	4	50176570	Profile Gasket 50
37	4	40055535	Flange 2 1/2 NHM
38	16	00215148	Socket Head Screw 10x20
39	1	00094750	Gasket 75x83x3
			lubricant