

## 5 inch Piston Intake Valve (stainless steel piston) with PRV



**⚠ WARNING**

**Read this instruction manual before use.**

Using this device without understanding this products operation and care may lead to injury. If you do not understand how to use this device and do not receive proper training, do not use this product.

# 1.0 WARRANTY

- AWG Fittings LLC warrants to the original purchaser and all subsequent purchasers of the AWG Fittings LLC products that the product is free from defects in material and workmanship during a one (1) year period from the date of its sale by AWG Fittings LLC.
- AWG Fittings LLC's obligation under this warranty is specifically limited to replacing or repairing any product which is determined by AWG Fittings LLC's inspection to be in a defective condition attributed to AWG Fittings LLC's manufacture or design. If AWG Fittings LLC determines the product is defective, then AWG Fittings LLC will repair or replace the product during the warranty period. The purchaser or beneficiary must notify AWG Fittings LLC of any alleged defect within a reasonable time period.
- If AWG Fittings LLC determines that the product is defective, then it will replace the product, repair the product or refund the purchase price, at AWG Fittings LLC's election.
- This warranty is a LIMITED WARRANTY. The original purchaser of the product and any subsequent purchaser of the product and any person who is an intended or unintended beneficiary of the product shall not be entitled to recover from AWG Fittings LLC and consequential or incidental damages for injury to person and/or property resulting from any defective product manufactured or assembled by AWG Fittings LLC. It is agreed that the price stated and paid for the product is in part consideration for limiting AWG Fittings LLC's liability.
- This is a limited Expressed Warranty Only. AWG Fittings LLC EXPRESSLY DISCLAIMS WITH RESPECT TO THE PRODUCT ALL IMPLIED WARRANTIES OF **MERCHANTABILITY** AND ALL IMPLIED WARRANTIES OF **FITNESS FOR A PARTICULAR PURPOSE**.
- There are NO WARRANTIES of any nature made by AWG Fittings LLC beyond that stated in this Warranty

# 2.0 Safety and Cautions

## Meaning of safety words

### DANGER

Indicates an imminently hazardous situation which, if not avoided, will result in death or serious injury

### WARNING

Indicates a potentially hazardous situation which, if not avoided, could result in death or serious injury.

### CAUTION

Indicates a potentially hazardous situation which, if not avoided, may result in minor or moderate injury.

## Safety and Cautions

### DANGER

This equipment is to be used by trained firefighting personnel only. Failure to obtain proper training may result in severe injury or death.

### DANGER

Do not exceed maximum operating pressure. Exceeding the maximum rated pressure for this appliance may cause malfunction, or failure resulting in severe injury or death.

### DANGER

Failure of fittings and hoses can result in injury. Use caution not to exceed hose pressures as stated in NFPA 1961 for the type of hose being used.

### DANGER

Make sure all connections are secure and complete. Failure to ensure proper connection may result in leaks or cause the devices to become disconnected under pressure resulting in injury or death.

### DANGER

Open and close all valves slowly. Failure to operate valves slowly may cause water hammer, which may result in damage or failure of hose, coupling devices, and appliances leading to injury or death.

### WARNING

Do not use if damaged. Damage to product may cause malfunction or failure. Remove from service until unit can be repaired.

### WARNING

Check for damage or worn coupling connections. Damage or worn connections may become disconnected under pressure. Remove from service to be repaired by an AWG certified repair facility.

### CAUTION

For use with fresh or salt water, with or without firefighting foam.

### WARNING

Altering of this device may reduce its operating effectiveness, or safety. Do not alter or change in any way from its intended design.

# 3.0 Overview

## Dimensions:

Height: 11.61in (295mm)

Length: 17.72in (450mm)

Depth: 6.46 in (164mm)

Weight: 18.3 lbs (8.3kg)

## Construction:

Aluminum body

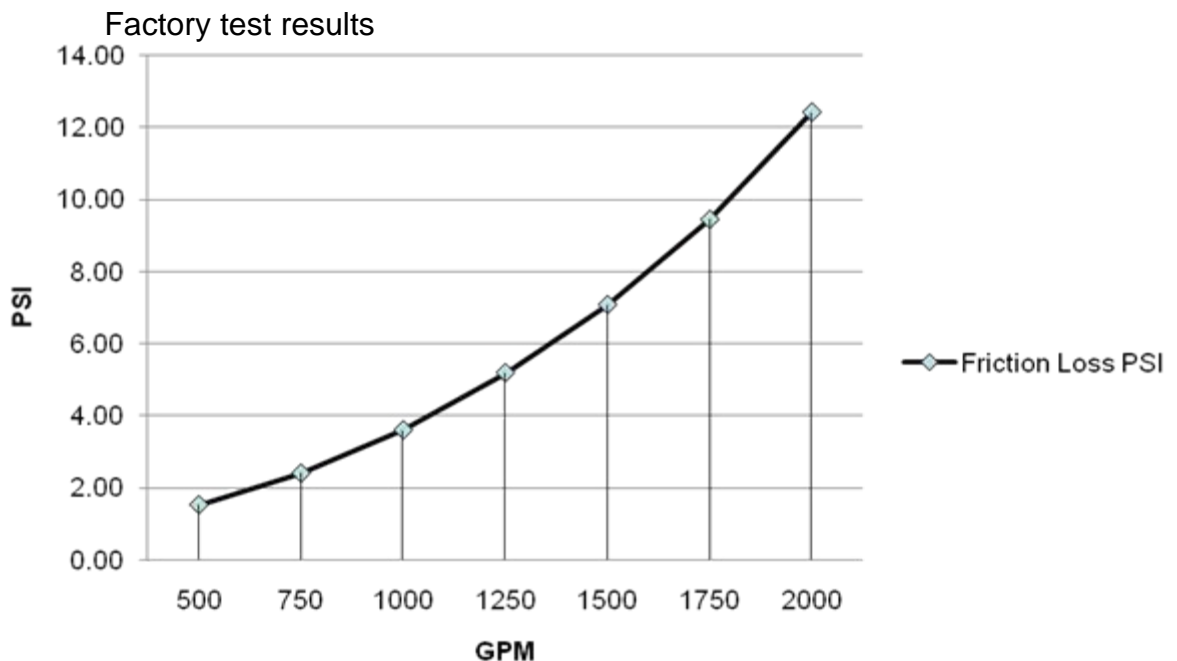
Stainless steel piston

## Operating pressures:

Normal operating pressure up to 200 psi.

Tested burst pressure per NFPA1965.

## Friction Loss:



## 3.0 Overview

**⚠ WARNING**

This intake valve has a 30° elbow to help reduce the stress on the coupling and reduce or prevent kinking of the hose line at the gate valve.

**⚠ WARNING**

This intake valve also has a pressure relief valve to automatically release excess pressure in the hose line. This relief valve must be set prior to use. Excess pressure in the hose line may cause failure of the hose leading to injury.

**⚠ CAUTION**

Dirt or debris in the relief valve may prevent the relief valve from operating or may cause the relief valve to operate prematurely.

**⚠ WARNING**

To properly set the pressure at which the relief valve will operate please see the included operating supplement for the pressure relief valve.

The relief valve has no field serviceable parts.

**⚠ DANGER**

If the relief valve operates continually, fails to operate or water leaks slowly through the relief valve during use, remove from service until valve can be cleaned, repaired and an AWG certified repair facility and the pressure reset.

This intake valve has a hydraulically balanced piston and therefore can be operated very easily even under pressure.

# 4.0 Operation

This appliance is designed has an intake valve and should be secured to the appropriate inlet prior to use.

**⚠ WARNING**

Inspect valve for damage or malfunctioning parts prior to use.

Do not use if damaged. Damage to product may cause malfunction or failure. Remove from service until unit can be repaired.

Ensure valve is fully closed.

**⚠ DANGER**

Attach hose line securely to appliance.

Make sure all connections are secure and complete. Failure to ensure proper connection may result in leaks or cause the devices to become disconnected under pressure resulting in injury or death.

Open the air bleeder on top of the valve completely.

**⚠ DANGER**

Slowly fill the hose line with water and allow all the air to bleed from the hose. Do not fill to quickly as this may cause a water hammer and damage valves, hoses, apparatus and/or appliances resulting in equipment failure or injury .

When all the air has been bled from the hose line, close the air bleeder valve completely.

**⚠ DANGER**

Slowly open the intake valve completely. Avoid opening quickly as this may cause a water hammer and damage valves, hoses, apparatus and/or appliances resulting in equipment failure or injury .

The valve should be open in approximately 9 complete turns of the control wheel.

**⚠ WARNING**

Open and close valves with your hands only. DO NOT use tools to assist in operating the valves.

# 4.0 Operation

**⚠ WARNING**

Always open and close valves fully and do not regulate water flow or pressure with the intake valve.

When operations are completed, shut down valve(s) completely.

**⚠ WARNING**

Bleed off any excess pressure in the hose lines and disconnect and drain hose lines.

**⚠ WARNING**

Attempting to disconnect valve before pressure is relieved may result in serious injury.

**⚠ WARNING**

After use, clean and inspect valve for damage or malfunctioning parts. Repair or replace damaged parts or remove valve from service until repairs can be made.

Do not use if damaged. Damage to product may cause malfunction or failure. Remove from service until unit can be repaired.

Check for damaged or worn coupling connections. Damaged or worn connections may become disconnected under pressure. Remove from service and repair appropriate parts.

Foam may be used with this appliance. Make sure to flush completely with fresh water after use. Some foam concentrates may leave residue that may cause corrosion or become sticky and interfere with the operation of the gate valve or PRV device and shorten the service life of this appliance.

Salt water may be used with this appliance. Make sure to flush with large amounts of fresh water after use with salt water. Salt water may shorten the service life of this appliance due to corrosion.

## 5.0 Care and Maintenance

[www.awg-fire.com](http://www.awg-fire.com)

### **⚠ WARNING**

After use, disconnect and drain all hose lines, and inspect the appliance for damage. If any components are damaged or malfunctioning, remove from service until appliance can be repaired.

### **⚠ CAUTION**

Dirt or debris in the relief valve may prevent the relief valve from operating or may cause the relief valve to operate prematurely.

Flush with fresh clean water after use to remove any dirt and debris. This is especially important if any firefighting foam, or saltwater has been used in this appliance.

Check valve on your normal maintenance routine.

### **⚠ WARNING**

Check all screws and bolts to ensure proper tightness.

Check gaskets and swivels to ensure proper operation. Replace and/or repair any damaged or malfunctioning parts.

Do not use if damaged. Damage to product may cause malfunction or failure. Remove from service until unit can be repaired.

### **⚠ DANGER**

On any appliance with a non-threaded coupling, (i.e. Storz) check the locking device on coupling for damage and ensure proper operation. Locking device should be clean, clear and free of damage. If locking device is malfunctioning, repair or replace the lock.

### **⚠ DANGER**

If the relief valve operates continually, fails to operate or water leaks slowly through the relief valve during use, remove from service until valve can be cleaned, repaired at an AWG certified repair facility and the pressure reset.



## 5.0 Care and Maintenance

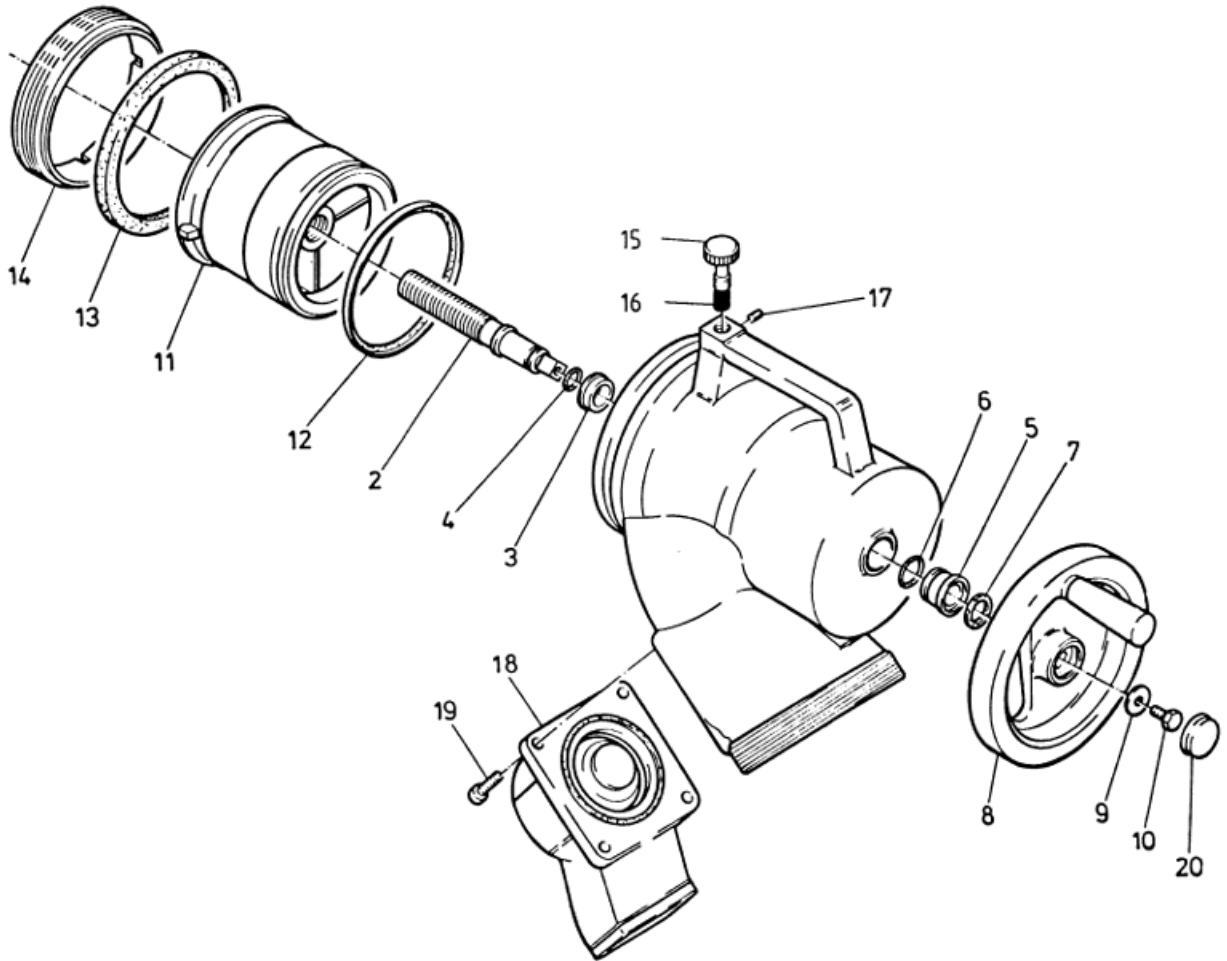


Lubricate as necessary with an AWG recommended lubricant. AWG lubricant is water resistant and does not contain mineral oil, solvents or silicone.

Do not use excessive amounts of lubricant, over lubricating may cause dirt to collect inside the valve.

Use only recommended lubricant, improper lubricants may cause premature failure of O-rings and seals.

# 6.0 Parts list



# 6.0 Parts list

Position	Quantity	Part-No.	Description
1	1	10049633	Body Piston intake 5" with sleeve insert
2	1	30278645	Spindle Piston intake valve V2A
3	1	50282794	Sleeve-A 28X18X10
4	1	00011251	O-ring 12.37X2.62 NBR70
5	1	50282635	Sleeve-A 28X18X24 HEL
6	1	00011651	O-ring 18.72X2.62 NBR70
7	1	00097554	Gasket 18X26X3 PTFE/ORIG.
8	1	30291233	Hand wheel SW14X160 black powder coated
9	1	00227248	Washer A 8.4 DIN 9021 ST./VZ
10	1	00169448	Set screw M8X16 D-933 8.8 VZ
11	1	30358846	Piston complete for piston intake 5"
12	1	50300599	TURCON GLYD RING+O-ring 346 N70B
13	1	40377058	Profile gasket DN 120
14	1	40377834	Pressure ring piston intake valve
15	1	50300431	Air bleeder screw M12X33
16	1	00341062	Sealing plug 8X18
17	1	00159845	Set screw M 4 X 6 DIN913 V2A
18	1	30277633	Pressure relief valve 82 200PSI
19	4	00214448	Hex bolt M 8X25 D6912 8.8 VZ
20	1	50300962	Plastic cap
21	1	00319162	Protection cap H400C1600
22	1	00319962	Protection cap LAW 1300/
23	1	00386062	Flange cap DN50 D-3443 FORM B EP 310/50/10-4
			lubricant